



London Gatwick Terminal Move

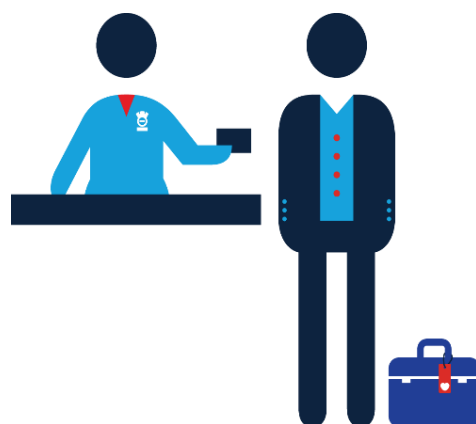
British Airways is moving to the South Terminal at London Gatwick Airport.

British Airways' last day of operation in the North Terminal will be on January 24, 2017. British Airways will welcome customers to its new facilities in the South Terminal on January 25, 2017.

Departure Date	
24 January	Gatwick inbound flights from long haul destinations arrive at the South Terminal on January 25
25 January	All Gatwick flights operated by British Airways depart from and arrive at the South Terminal from January 25

Check-in

Customers can check in at Zone A and C in the South Terminal. The zones will feature 29 check-in desks in addition to 12 Self Service Bag Drops. Customers must be in possession of a boarding pass in order to use a Self Service Bag Drop.



Security is located on level 3.

Flight Connections

Customers connecting between the North and South Terminals have a minimum connection time of 90 minutes.

Customers connecting within the South Terminal between British Airways flights have a minimum connection time of 60 minutes, with the exception of connections to or from Domestic, Channel Islands and Republic of Ireland which have a minimum connection time of 75 minutes.

Additional Information

Gatwick railway station is directly accessible from the South Terminal.



Premium Customers

Premium Check-in

There are a number of desks allocated in Zone A for premium customers to check-in including First, Club World, Club Europe, Executive Club Gold and Silver and One World equivalent customers.

The Premium area in the check-in zone features a much larger space. This newly defined area will give customers an exclusive space to check-in for their flight, which includes extended seating, power sockets and bespoke furnishings.

Security

Premium security is located on level 3 and will enable customers to access the departure lounge on the upper level which allows for easy access into the British Airways lounges.

Lounge

A brand new lounge will feature in the South Terminal for our premium customers which will include the following features:

- 477 seats, 40% larger than the North terminal lounge
- A separate First lounge with upgraded seating, finishes and lighting
- Floor to ceiling windows offering fantastic views of the runway
- A beautifully curved staircase overlooking the main lounge
- Full kitchen facilities in both lounges giving an upgraded offering
- Children can enjoy the 'kidszone' room
- Shower facilities



**Galleries Evolution in Dubai & Singapore*